

LES POISSONS



FORMATION ODYSSEE Plongée bio

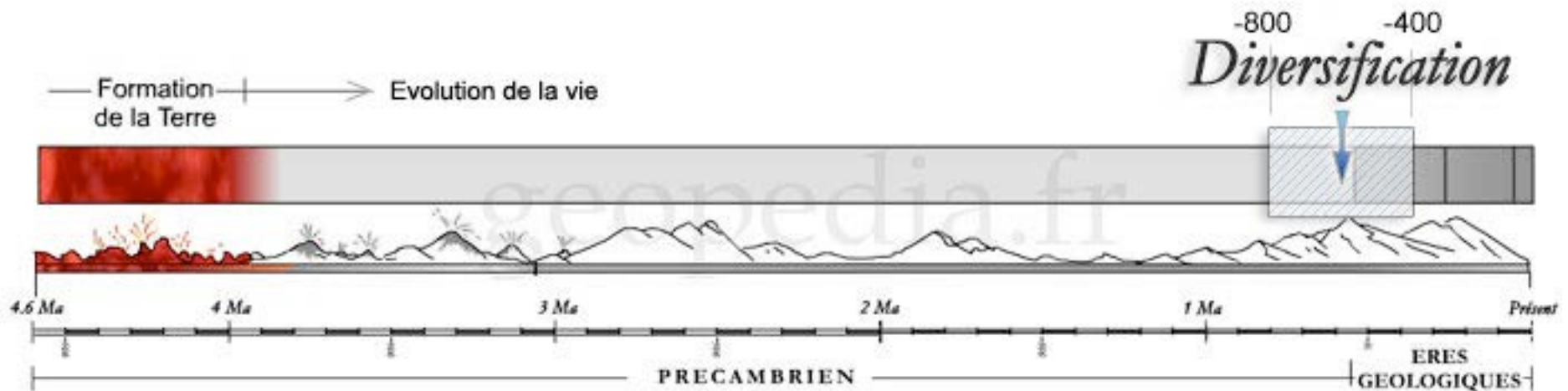
PLAN

- REPERES
- ANATOMIE
 - POISSONS OSSEUX
 - POISSONS CARTILAGINEUX
 - ANATOMIE COMPAREE
- MILIEU ET ADAPTATION
- NUTRITION
- REPRODUCTION
- QUIZZ...



REPERES

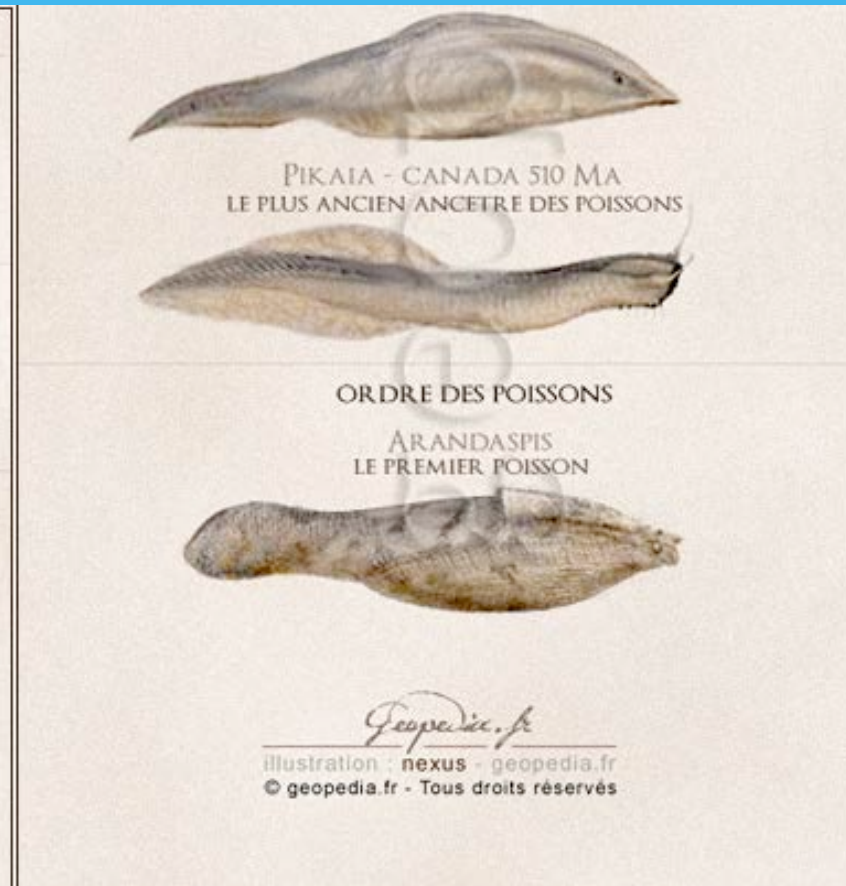
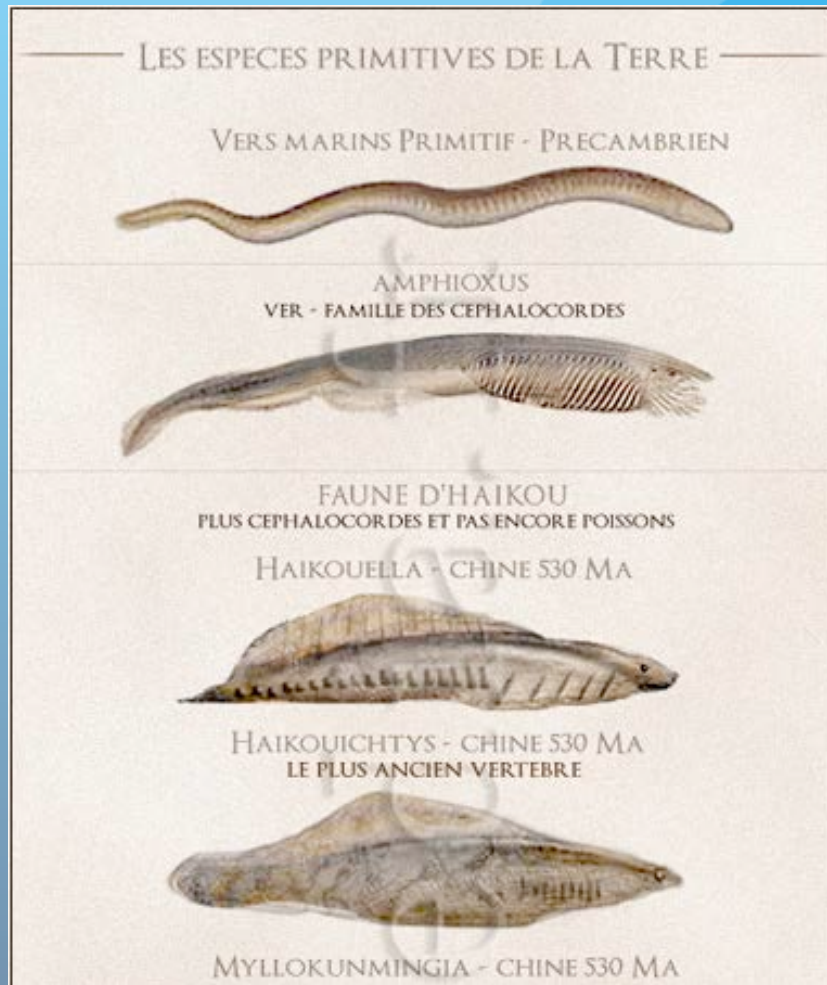
-3600 Ma → -600 Ma : LA VIE S'INSTALLE



FORMATION ODYSSEE Plongée bio

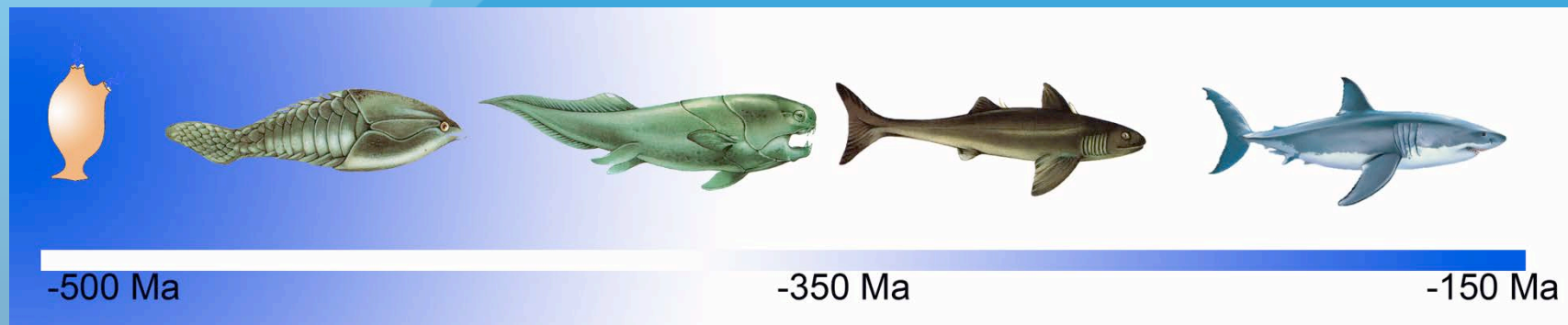
REPERES

-600 Ma → -400 Ma : Du ver au vertébré



REPERES

- 400 MILLIONS D'ANNEES
 - LES PLUS ANCIENS DES VERTEBRES



- BENTHIQUES
- PELAGIQUES
- ABYSSAUX
- 2 CLASSES :
 - OSSEUX
 - CARTILAGINEUX



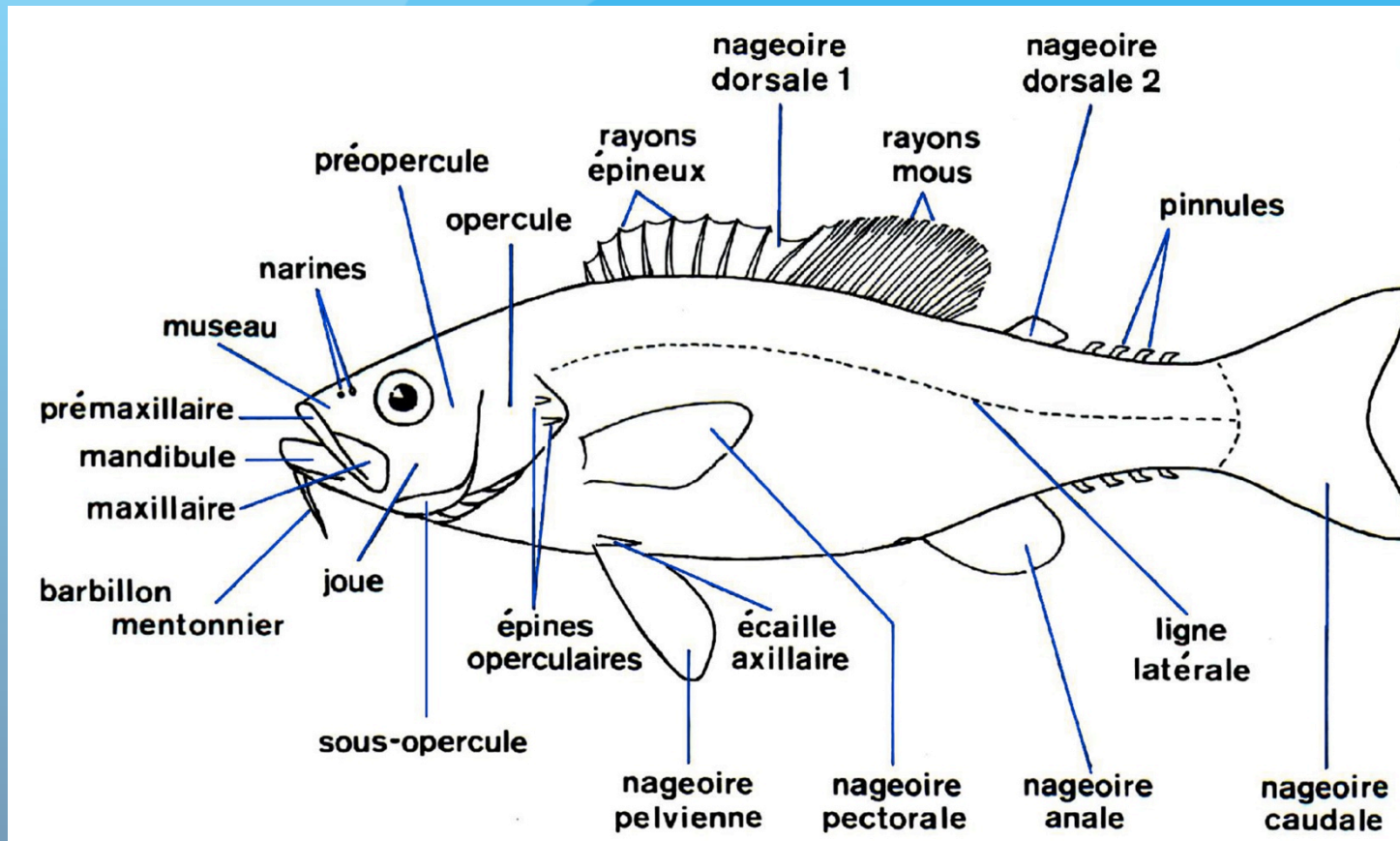
POISSONS OSSEUX :



FORMATION ODYSSEE Plongée bio

POISSONS OSSEUX :

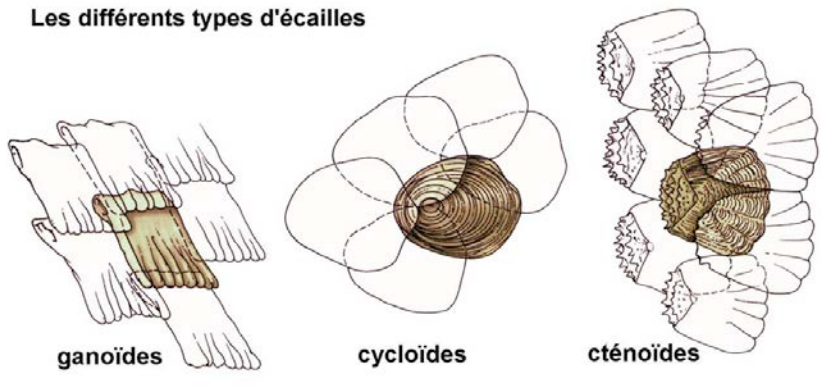
ANATOMIE GENERALE EXTERNE



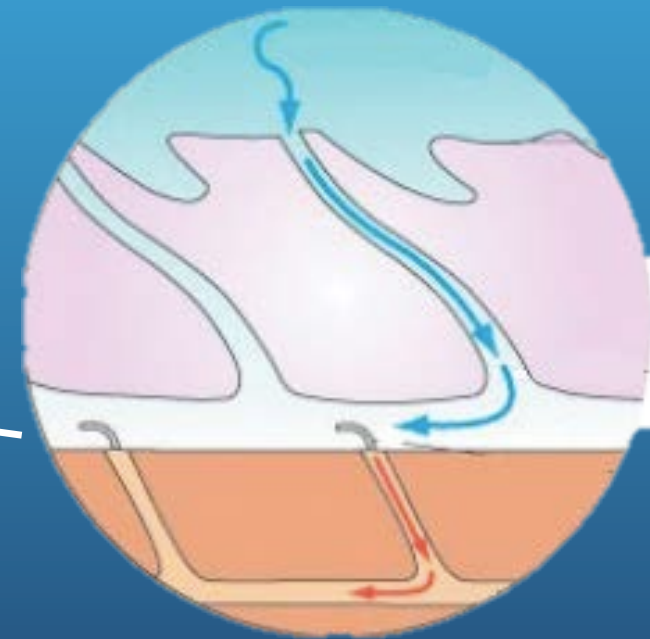
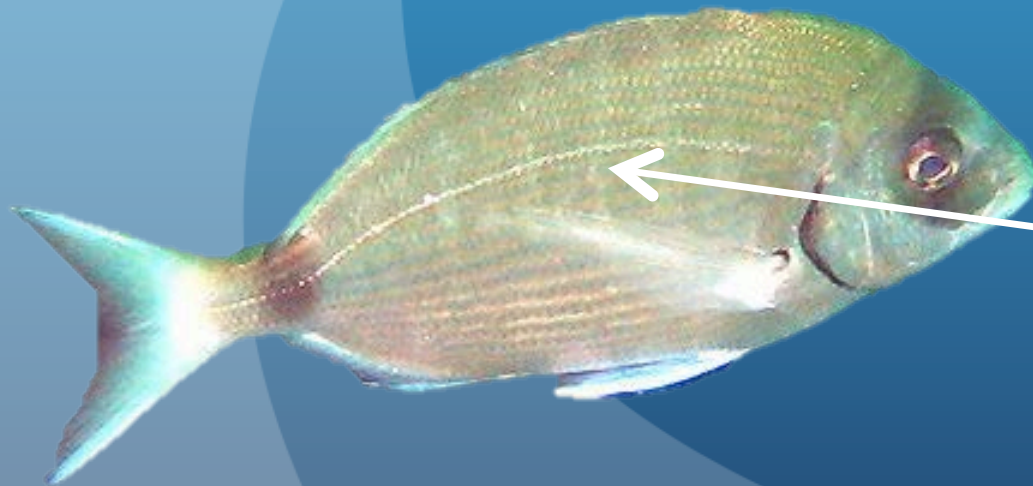
POISSONS OSSEUX :

ANATOMIE GENERALE EXTERNE

Les différents types d'écailles

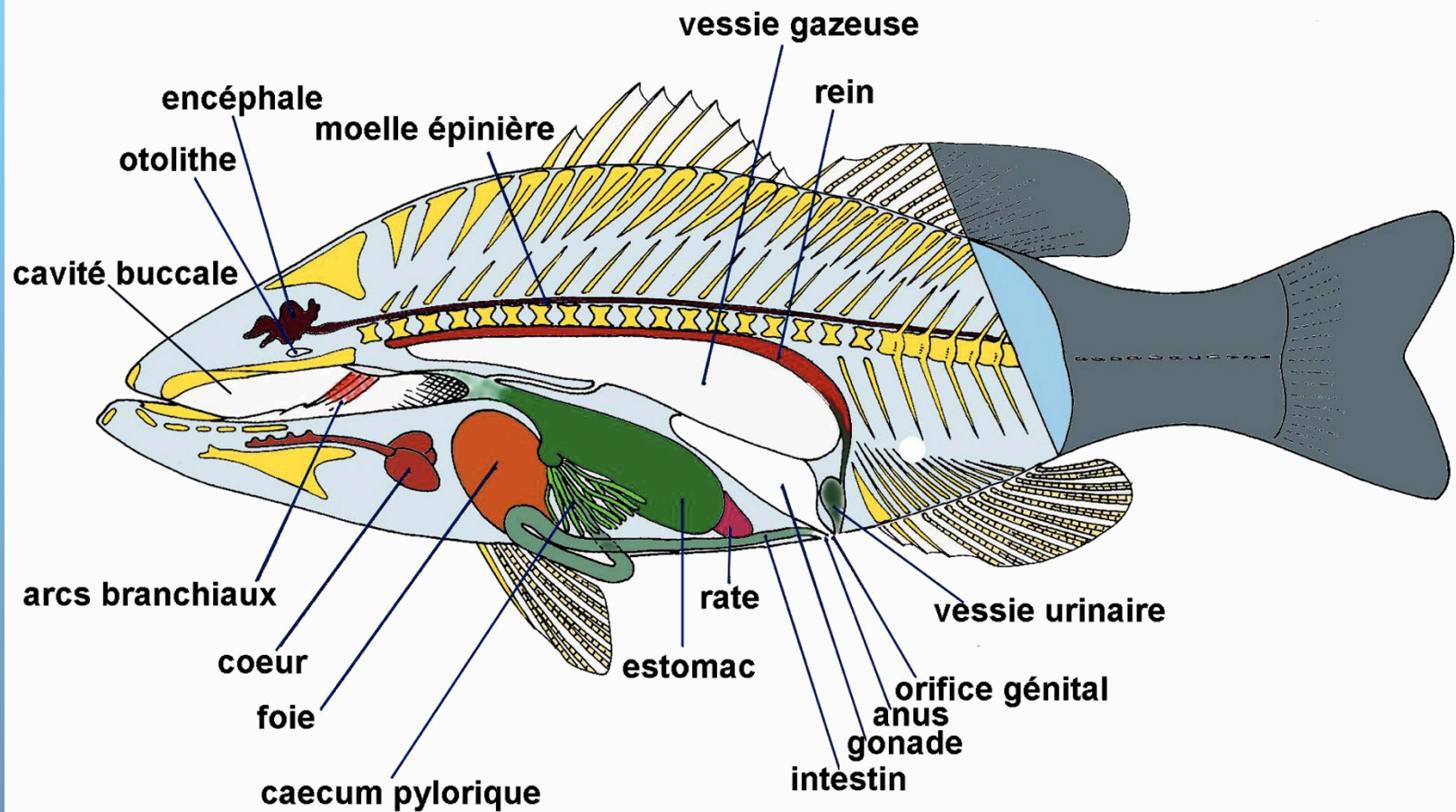


- LES ECAILLES
- PEAU LISSE GLUANTE



- LA LIGNE LATERALE

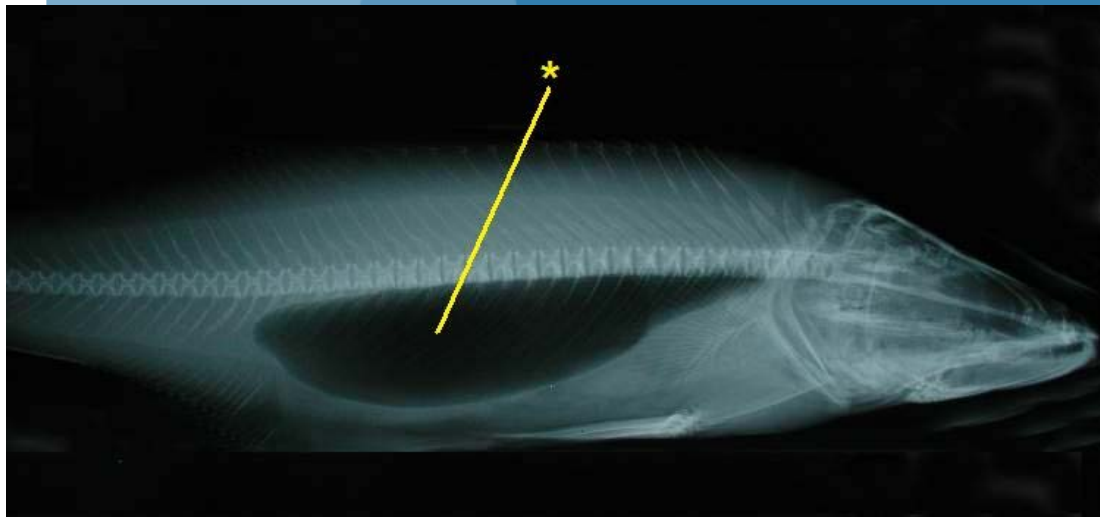
POISSONS OSSEUX : ANATOMIE GENERALE INTERNE



POISSONS OSSEUX :

LA VESSIE NATATOIRE

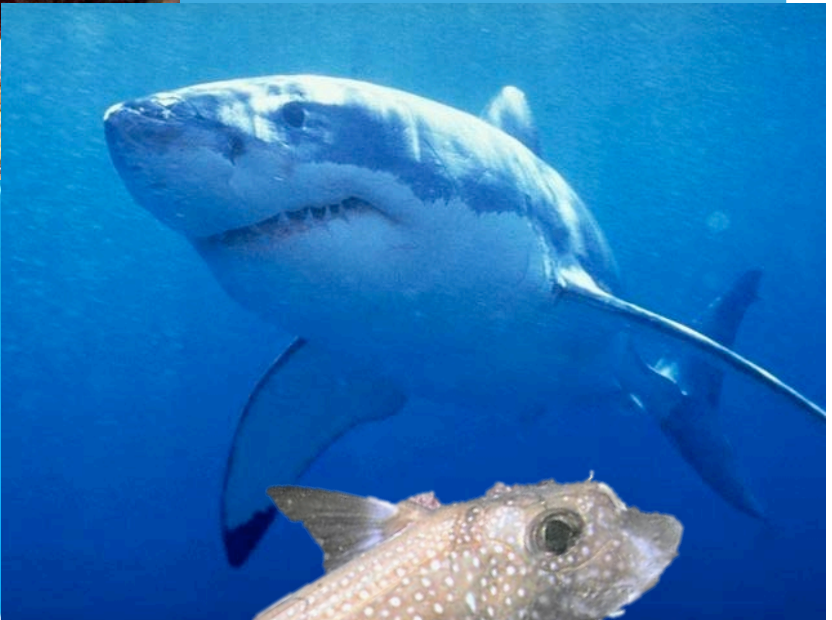
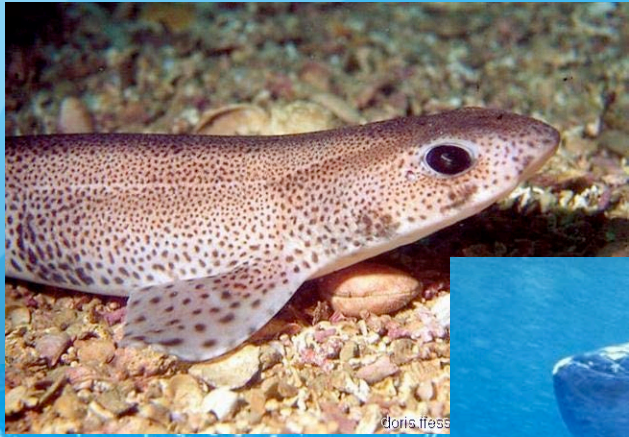
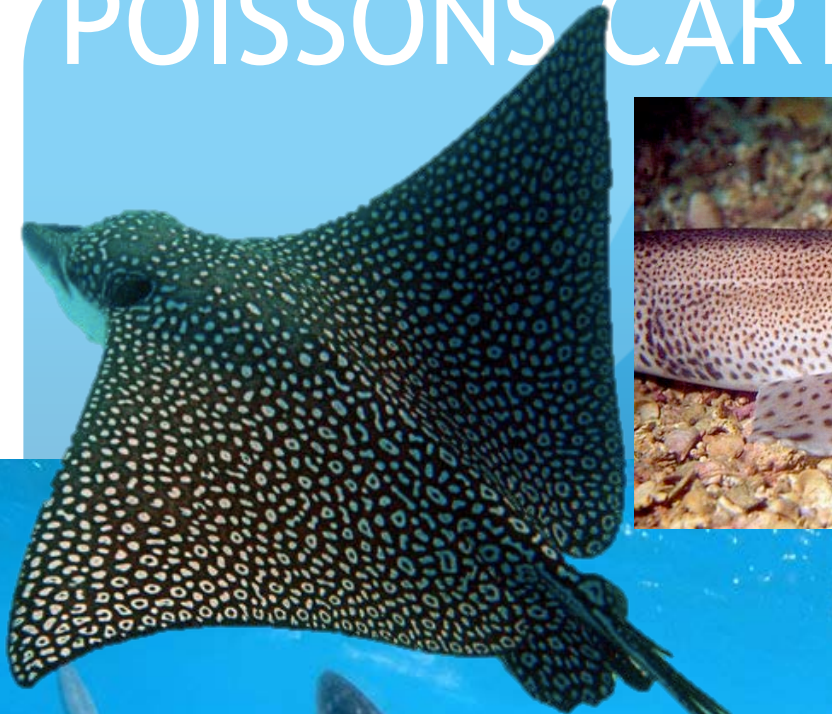
- POUR LES PELAGIQUES
- FONCTION :
 - STAB
 - MAINTIEN COLONNE
 - AMPLIFICATION SONS



POISSONS OSSEUX : LES BRANCHIES

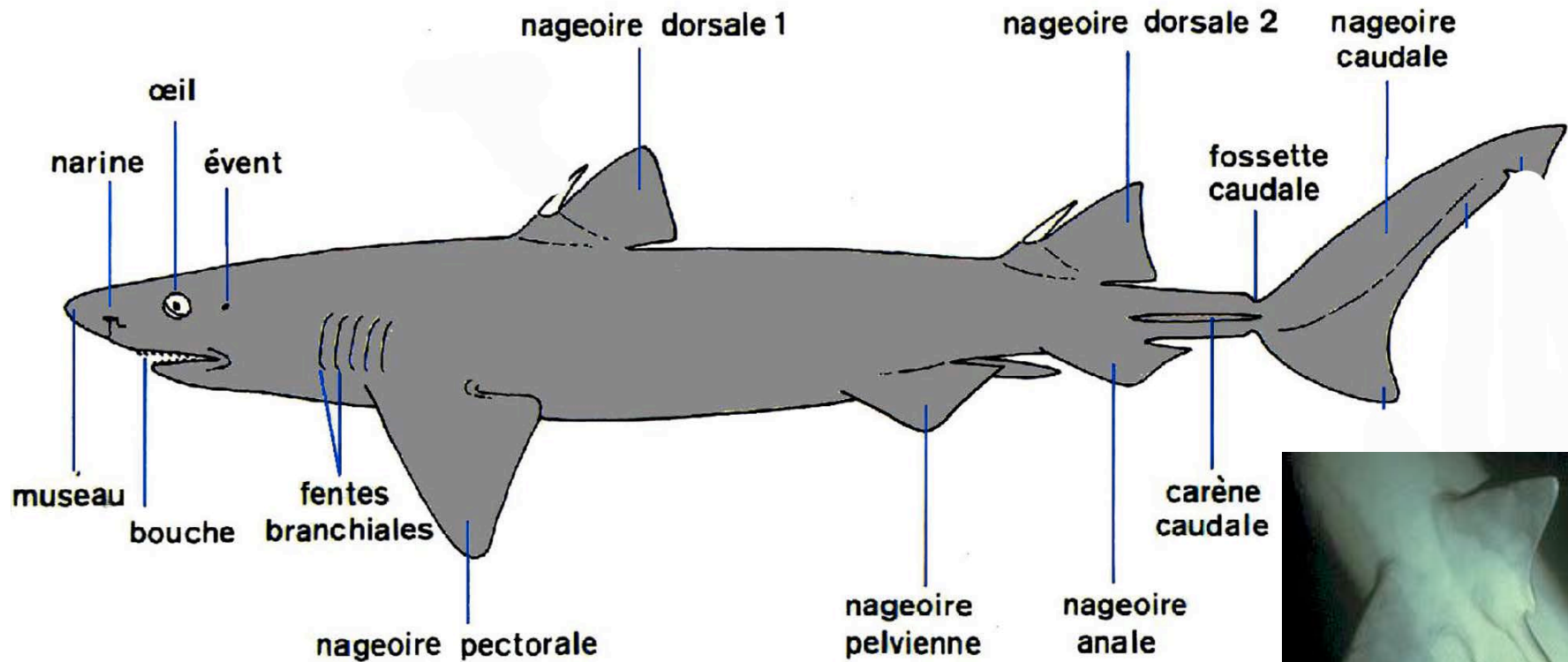


POISSONS CARTILAGINEUX :



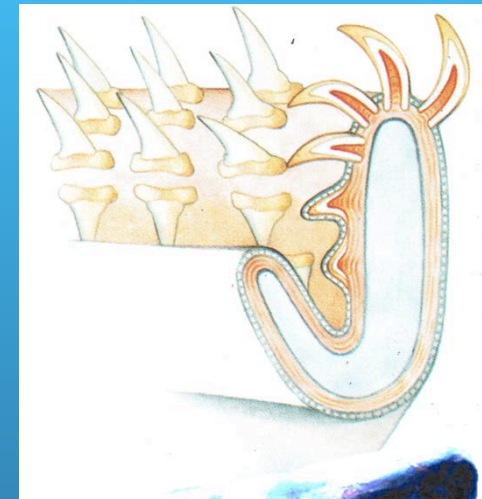
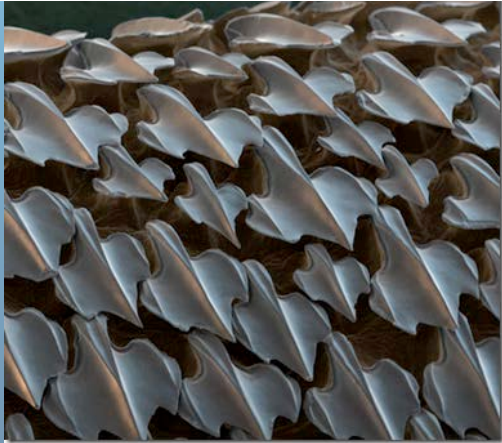
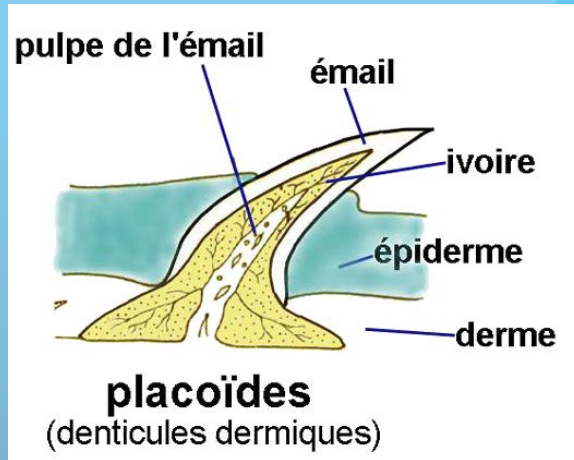
POISSONS CARTILAGINEUX :

ANATOMIE GENERALE EXTERNE



POISSONS CARTILAGINEUX :

ANATOMIE GENERALE EXTERNE



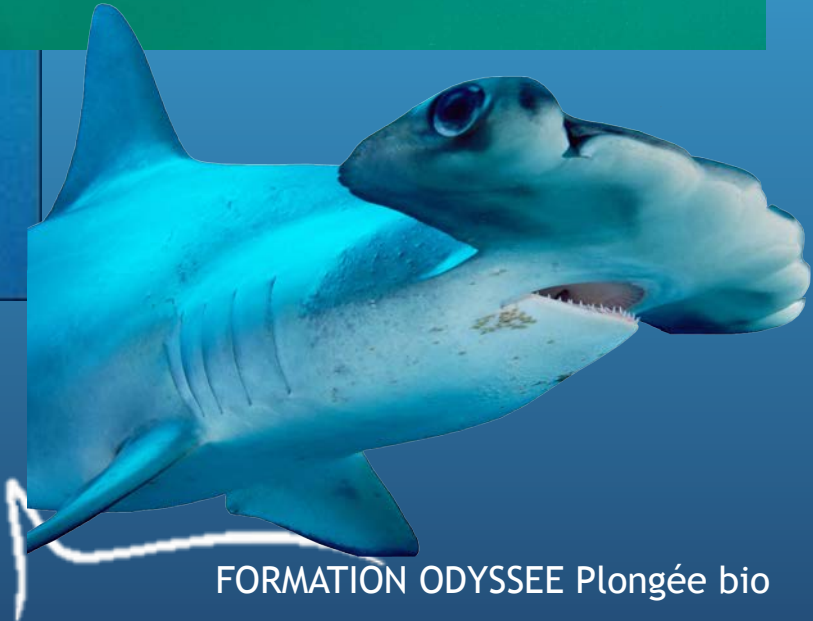
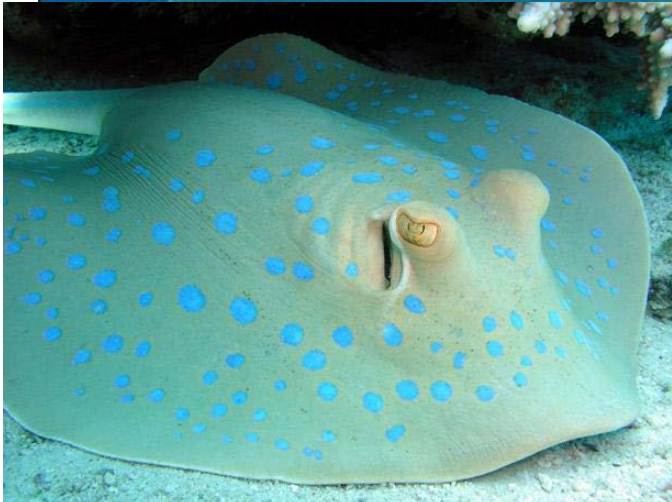
- LES AMPOULES LORENZINI ET L'OLFACTION



• LES DENTS
FORMATION ODYSSEE Plongée bio

POISSONS CARTILAGINEUX :

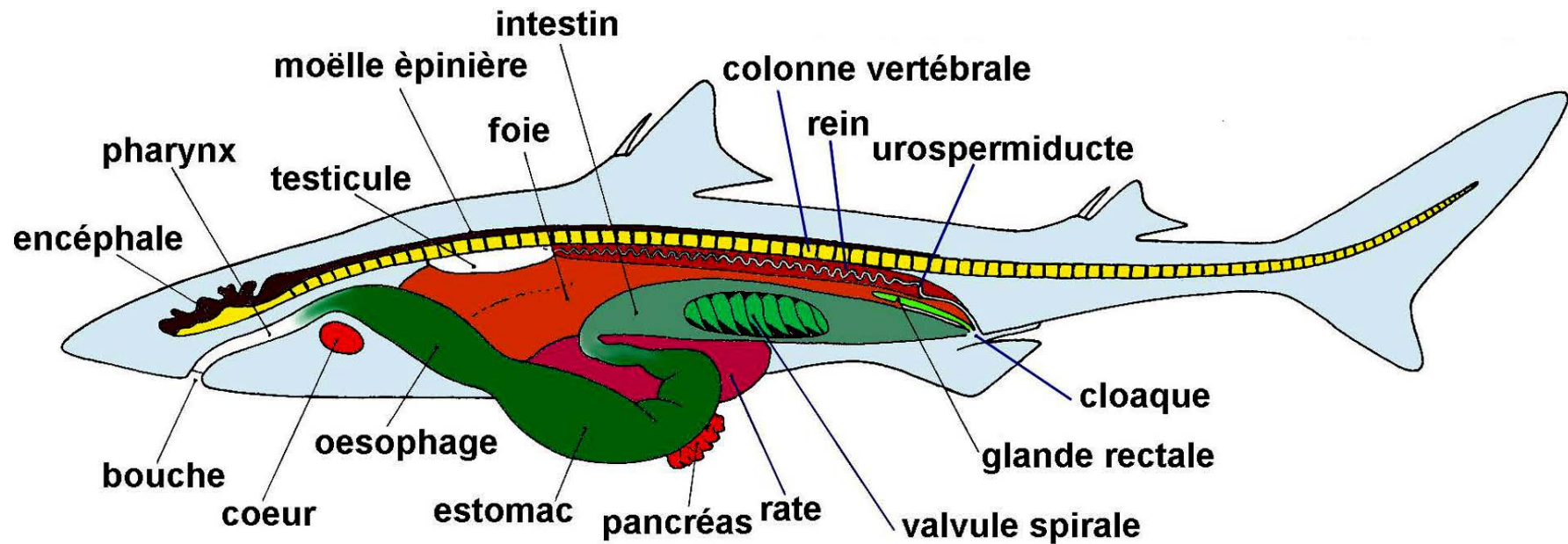
ANATOMIE GENERALE EXTERNE



FORMATION ODYSSEE Plongée bio

POISSONS CARTILAGINEUX :

ANATOMIE GENERALE INTERNE



POISSONS :

ORGANES DES SENS



- YEUX
- OREILLES (OTHOOLITES)
- LIGNE LATÉRALE
- NARINES
- PORES CEPHALIQUES
- BARBILLONS
- AMPOULES LORENZINI

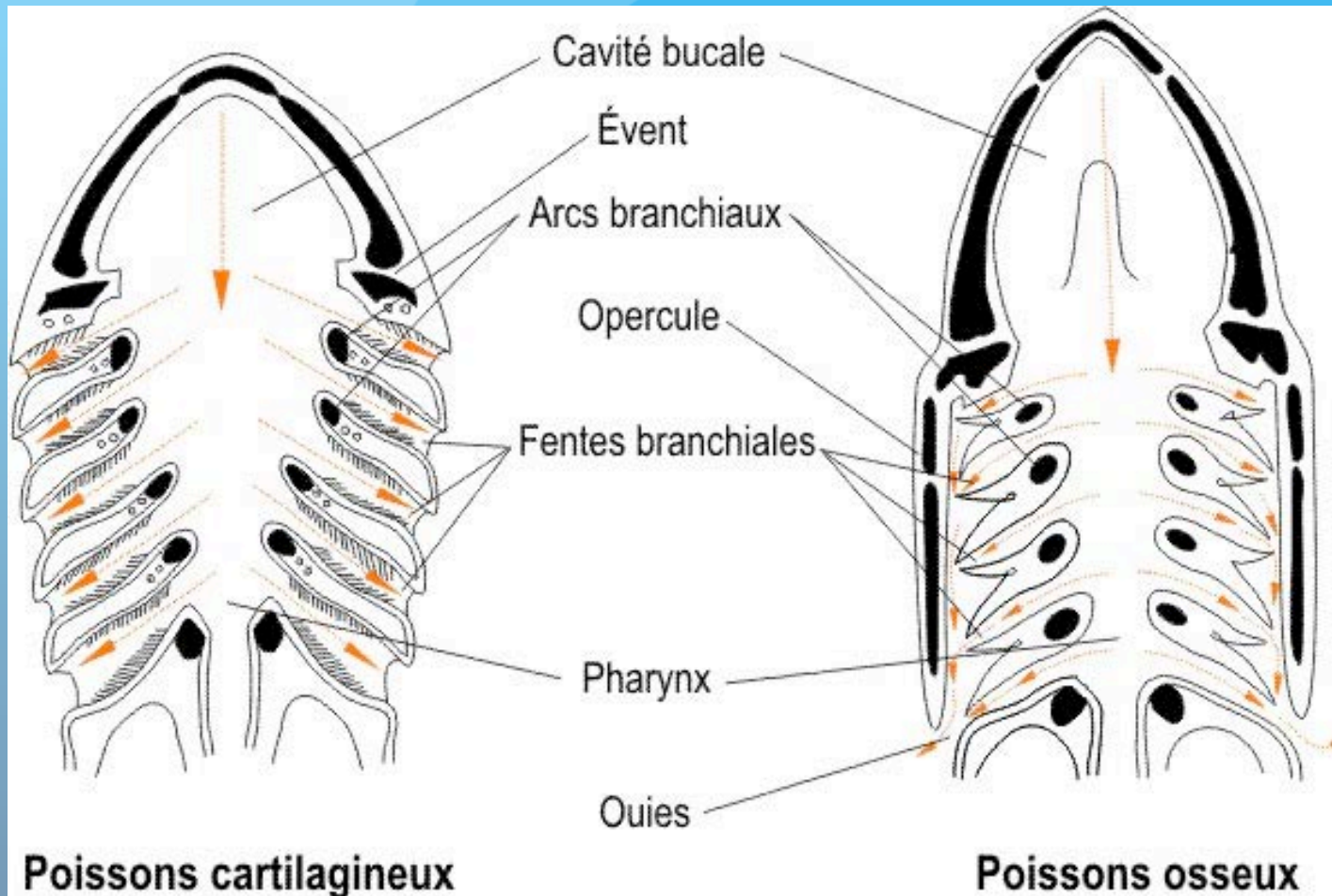


ANATOMIE COMPAREE

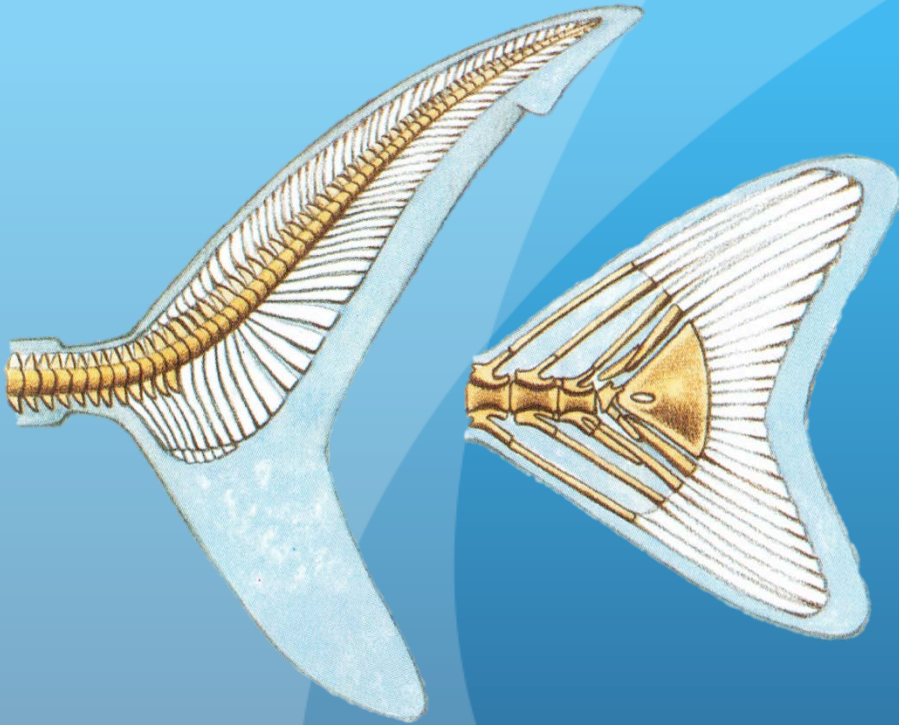


FORMATION ODYSSEE Plongée bio

LES BRANCHIES: RESPIRATION ET FILTRATION



LES NAGEOIRES CAUDALES



LES YEUX



MILIEU ET ADAPTATIONS

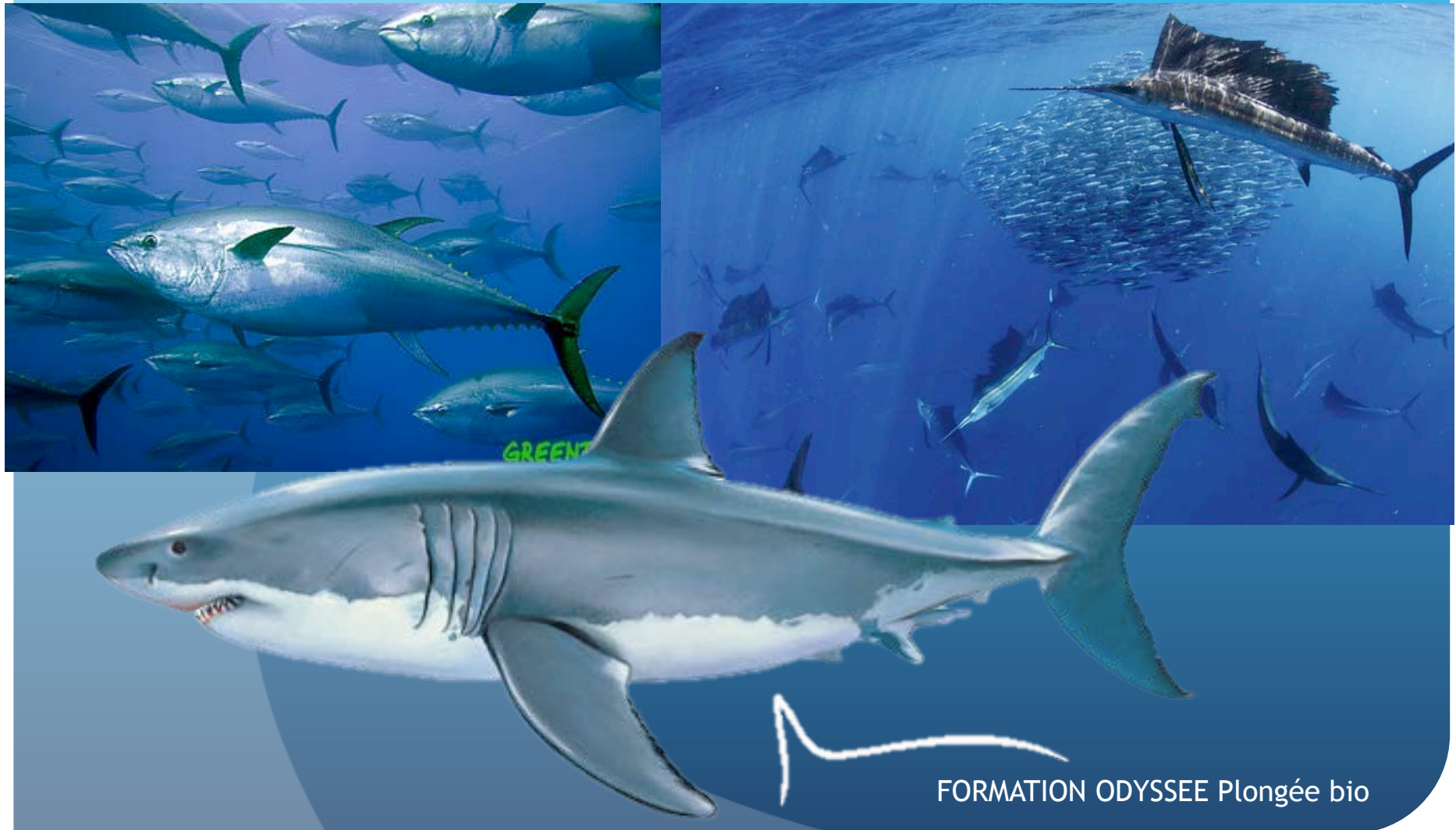
LES BENTHIQUES



doris.ffesm.fr © Nicolas PERRIN

MILIEU ET ADAPTATIONS

LES PELAGIQUES



MILIEU ET ADAPTATIONS

LES ABYSSAUX

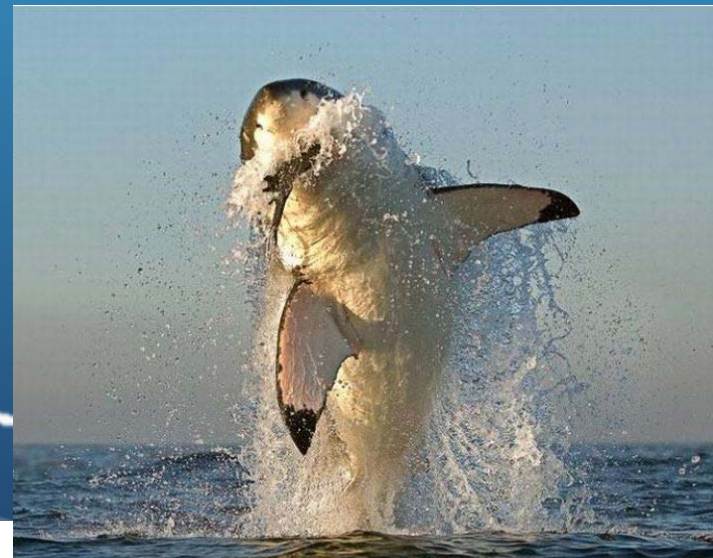




doris.ffesmm.fr © Véronique LAMARE

LA NUTRITION

- VEGETARIENS
 - BROUTEURS
- CARNIVORES
 - ZOOPLANCTONOPHAGES
 - PISCIVORES,
PLONGEURIVORES...





doris.ffesam.fr © Philippe BOURJON

LA NUTRITION

- CARNIVORES
 - CONCHILIPHAGES
 - NETTOYEURS
- OMNIVORES



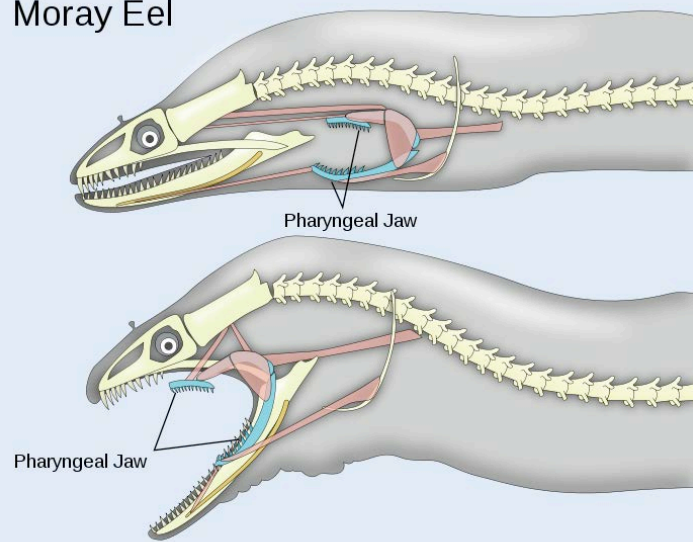
C.COUDRE

LA NUTRITION

- MURENE VS REQUIN LUTIN
(ALIEN VS PROTRAKTIL)



Moray Eel



LA NUTRITION

- L'ADAPTATION DU SILURE ALBIGEOIS



LA REPRODUCTION

LES POISSONS OSSEUX



- HERMAPHRODISME
 - D'ABORD MALE
 - D'ABORD FEMELLE
 - LES DEUX EN MM TEMPS
- SEXES SEPARES



LA REPRODUCTION

LES POISSONS OSSEUX

- FECONDATION EXTERNE
- OVIPARE
 - PONTE PELAGIQUE
 - PONTE BENTHIQUE



ARKive
IMAGES OF LIFE ON EARTH

For thousands of videos, images and
fact-files illustrating the world's species
visit www.arkive.org

ARKive

www.arkive.org

This media is protected by copyright, please see end of clip for details.
Use of this media is restricted, please see www.arkive.org/terms.html.

LA REPRODUCTION

LES POISSONS OSSEUX

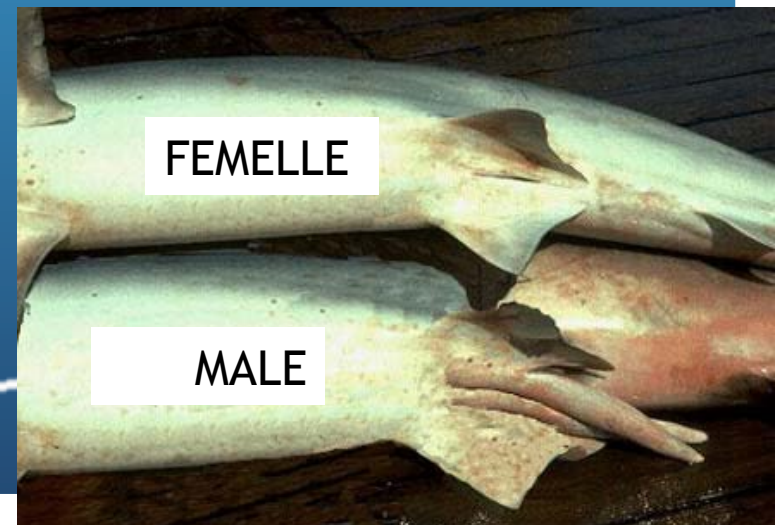
- LES SPECIAUX
 - AOGON
 - HYPPOCAMPE
 - BAUDROIE ABYSSALE



LA REPRODUCTION

LES SELACIENS

- SEXES SEPARÉS
- FECONDATION INTERNE
- OVIPARE
- VIVIPARE
- OVOVIVIPARE



PHOTOS DES POISSONS LOCAUX ...

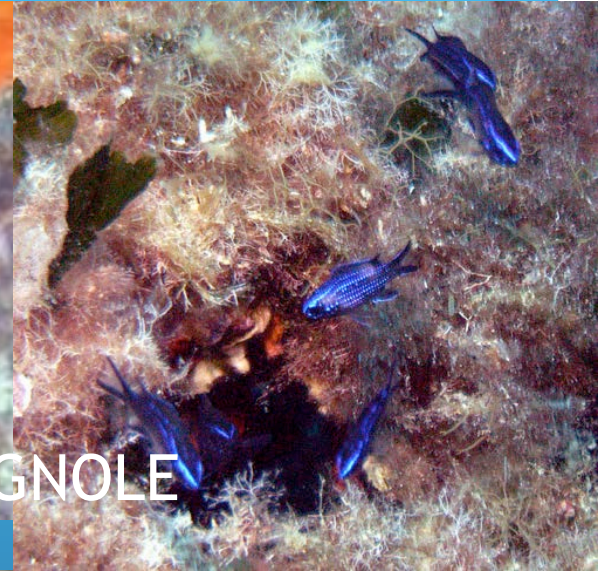




SAUPE

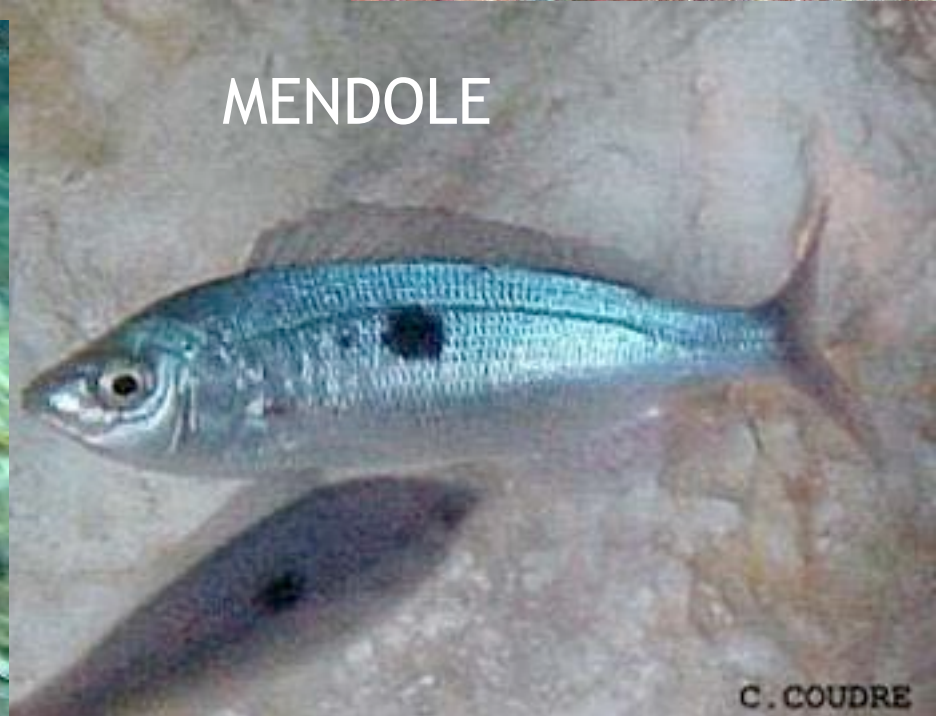


CASTAGNOLE



OBLADE

Marc SALVADORI



MENDOLE

C. COUDRE



**BLENNIE
GATUROGINE**



BLENNIE PAON



**BLENNIE
PILLICORNE**

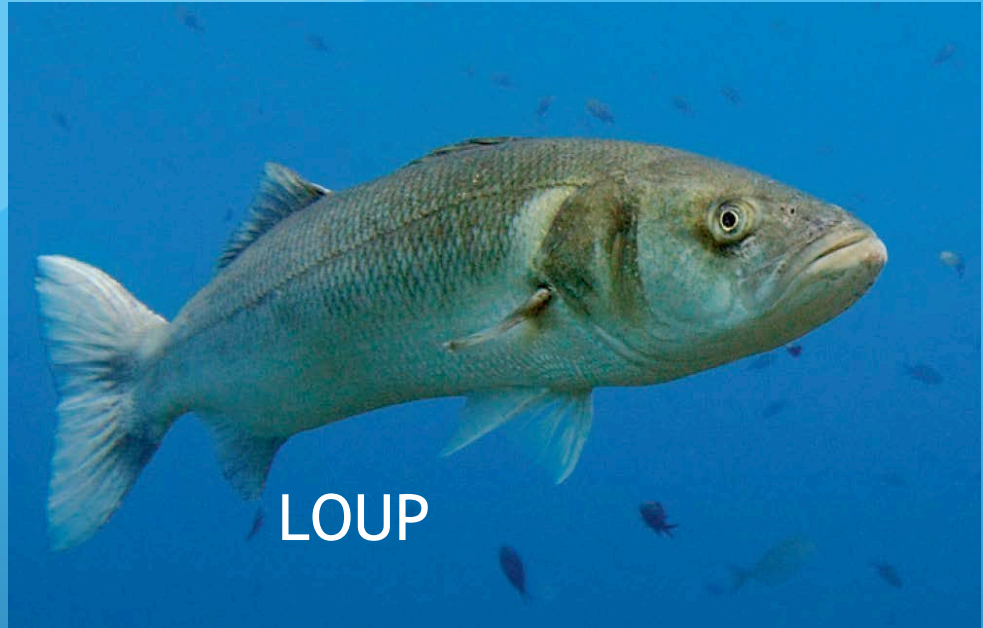


BLENNIE DE ROUX

FORMATION ODYSSEE Plongée bio



DAURADE ROYALE



LOUP



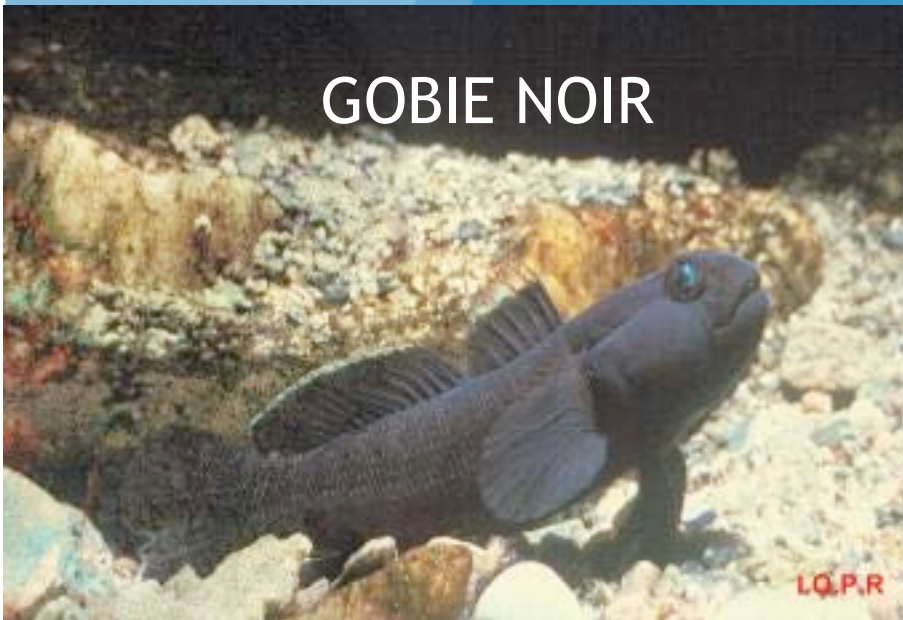
MULET



GOBIE JAUNE



GOBIE NOIR



GOBIE A BOUCHE
ROUGE





SAR TAMBOUR



SAR COMMUN



SAR A TETE
NOIRE

webPlongee.com



FORMATION ODYSSEE Plongée bio



SERRAN
ECRITURE

© François Zylberman



SERRAN
CHEVRETTE

webPlongee.com

APOGON



TRIPTERYGION



SINGNATHE



ANTHIAS



Marie RAMM



LABRE VERT

MEROU



CRENILABRE
PAON

© D. STREIFF

VIELLE



© Mer et littoral

FORMATION ODYSSEE Plongée bio

GIRELLE FEMELLE



GIRELLE MALE



ROUGET



SOLE



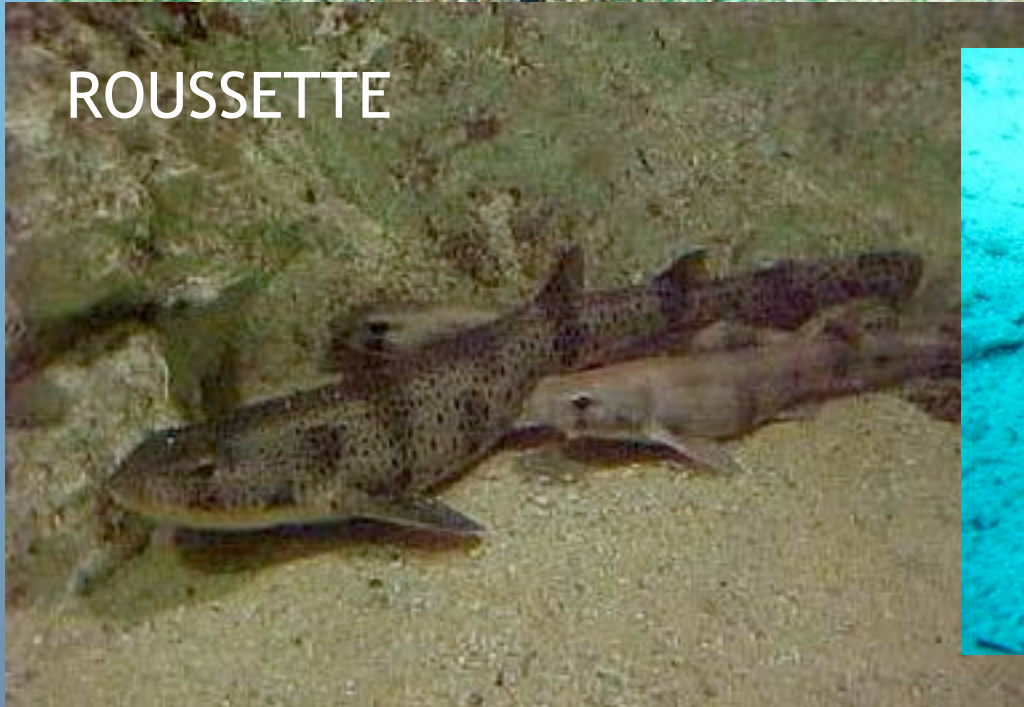


RAIE TORPILLE

RAIE BRUNETTE



ROUSSETTE

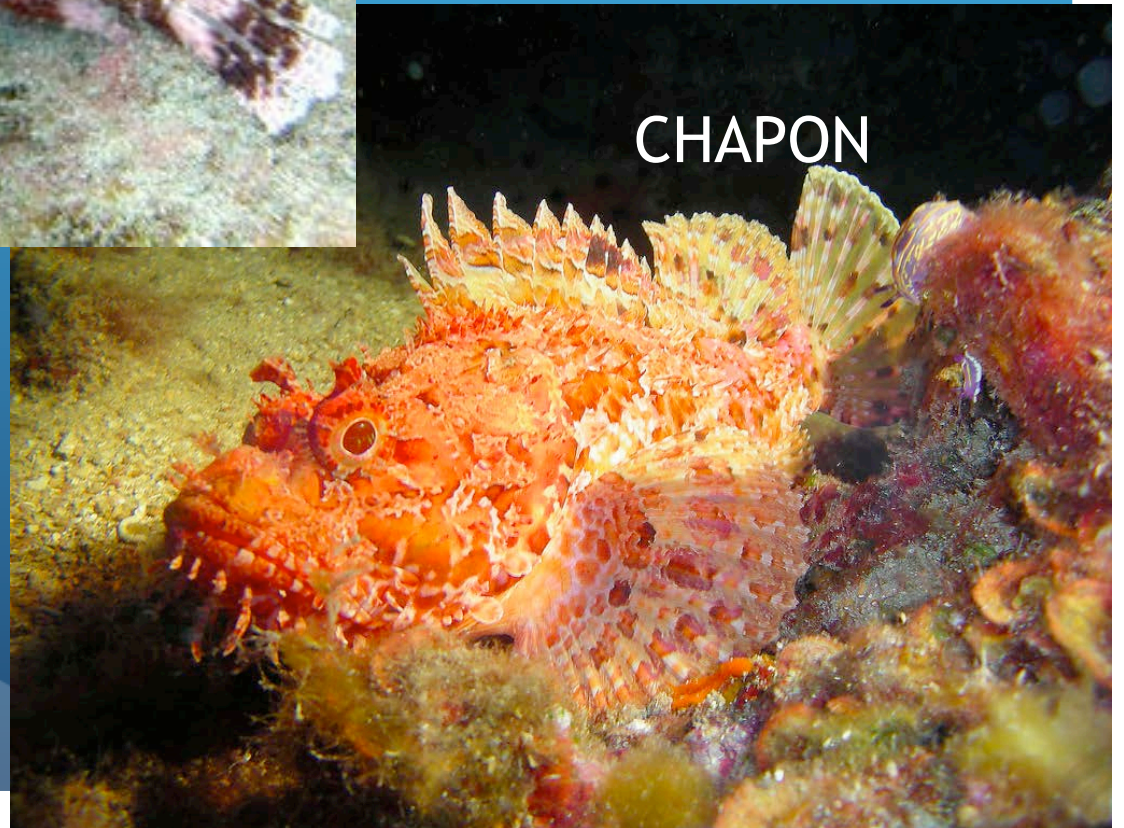


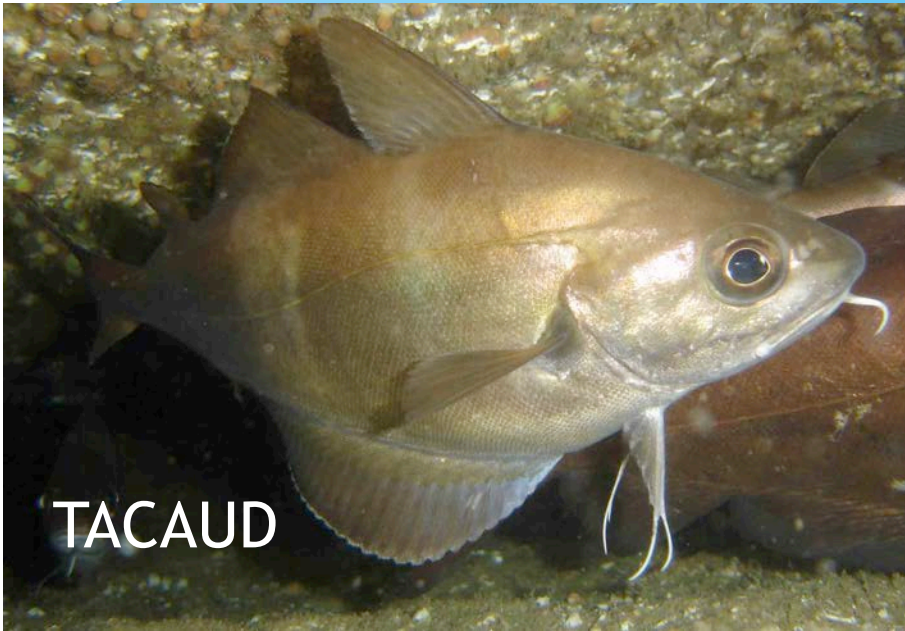
PASTENAGUE

RASCASSE BRUNE



CHAPON





TACAUD



MOSTELLE

C.COUDRE

PHOTOS DE CEUX QU'ON
VERRÀ MOINS A SETE...



FORMATION ODYSSEE Plongée bio



REQUIN
BALEINE



COELACANTHE



REQUIN DU
GROENLAND



REQUIN
PELERIN

MOTS CLES

- POISSONS CARTILAGINEUX
 - FECONDATION INTERNE
 - ECAILLES PLACOIDES
 - 5 FENTES BRACHIALES
 - CARNIVORES
- POISSON OSSEUX
 - OPERCULES
 - FECONDATION EXTERNE
 - VESSIE NATATOIRE



QUIZZ ...



FORMATION ODYSSEE Plongée bio

JE SUIS :

- a) Une blennie pillicorne
- b) Un tryptérigion
- c) Un sar tambour
- d) Une mendole
- e) Un serran chevrette
- f) Un anthias
- g) Un serran écriture
- h) Une blennie paon
- i) Une rascasse
- j) Une girelle mâle
- k) Une castagnole juvénile
- l) Un labre vert
- m) Un rouget
- n) Une raie pastenague
- o) Une raie torpille
- p) Une blennie gaturogine
- q) Une poule
- r) Une roussette
- s) Un saupe
- t) Une daurade royale



